

# BECKLEY BULLETIN

## 5 February 2016



### February

Tuesday 9 Mathsbusters 3.30-4.45pm  
Thursday 11 Paradise Park Trip - Years R, 1, 2  
BSA Meeting : 7.30pm Rose & Crown  
Friday 12 Big Bang Fair - Years 5/6  
Disco 5-6pm, Village Hall  
Last day of Term 3  
Monday 22 First day of Term

### March

Thursday 3 World Book Day  
Tuesday 8 Blue Spruce - Theatre in a Day  
Wednesday 9 Year 2 Multi Skills  
Friday 11 MUFTI Day  
Friday 18 Easter Bonnet Day  
Easter Fayre  
Wednesday 23 Easter Service - 2pm Beckley Church  
Last Day of Term 4

### April

Monday 11 First Day of Term 5  
Friday 15 Yellow Day for St Michael's Hospice  
Saturday 16 Horticultural Society Spring Show

### END OF TERM DISCO: Friday 12 February -

Mrs Langmead is organising an end-of-term disco at the Village Hall from 5-6pm. All primary aged children are welcome, although parents of KS1 children will be expected to stay too.

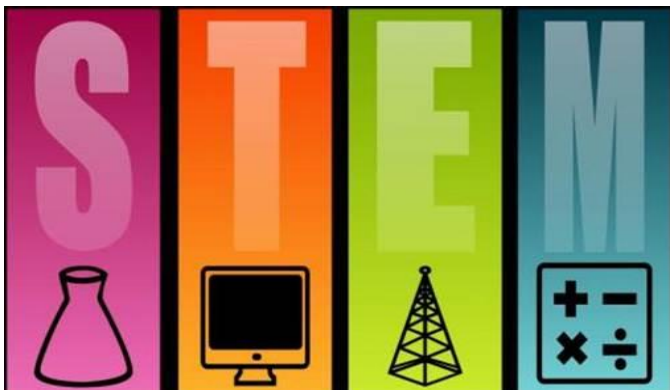


Drinks available. Tickets are £3.00 per child and can be purchased from the school office.



**WORLD BOOK DAY:** Thursday 3 March is World Book Day. Children may come to school dressed as a book character; they should also bring the book the character is in. If children do not wish to dress up then full school uniform must be worn.

Please also look out for the £1 tokens which will be sent home in book bags on that day. Tokens are valid until 27 March 2016 and entitle children to one free £1 World Book Day book or £1 off a book or audio book worth £2.99 or more at all participating bookshops.



### STEM BIG BANG FAIR: Friday 12 February -

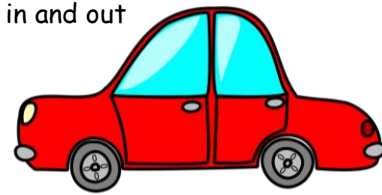
Evergreen class will be attending the Big Bang event at Rye College. This is an opportunity for the children to enjoy a morning of STEM-related workshops and activities with a view to inspiring young people from all backgrounds to study science, technology, engineering and maths (STEM).

### SAINBURY'S ACTIVE KIDS VOUCHERS 2016:

As you know, we are once again collecting the Active Kids vouchers. The collection box is in the entrance hall and we look forward to receiving as many vouchers as possible.

### PARENTS WHO DRIVE THEIR CHILDREN TO

**SCHOOL:** Several neighbours have spoken to us this week regarding where parents are parking. Please could we ask all parents who drive to the school to be considerate when parking. Please do not park across residents' drives and ensure there is sufficient space for them to be able to drive in and out safely. There has been a particular incident this week which could have led to a serious accident.



Please also be aware that the playgroup have safety concerns about parents who then drive down to the village hall to turn around. If you do this, please ensure you drive very slowly within the car park.

### YEAR 2 MULTI SKILLS : Wednesday 9 March -

Pupils in Year 2 will be attending a multi-skills morning organised by Rye Sports Cluster. Further details will be sent home in book bags after half term.

**EMERGENCY SCHOOL CLOSURES:** Please remember that if we do need to close the school due to inclement weather, or indeed for any other reason, we will of course endeavour to contact everyone via our text messaging service. However, you can also find out details of any emergency closures by checking



the East Sussex County Council website : [www.eastsussex.gov.uk/educationandlearning/schools/schoolclosures](http://www.eastsussex.gov.uk/educationandlearning/schools/schoolclosures) The website also gives you the opportunity to sign up for email alerts as soon as a decision is taken to close the school. Announcements are also made on local radio stations including BBC Radio Sussex, Heart FM and Arrow FM.

**MUSIC CLASSES :**

**Keyboard/Oboe:** Wednesday mornings.  
*\*\*\*We will let you know as soon as we can when classes will be resumed*



**Guitar/Violin:** Thursday mornings  
 The last lesson in Term 3 - Thursday 3 February.  
 Classes resume - Thursday 25 February

**SCHOOL CLUBS:**

**Tag Rugby: Blue Spruce & Evergeen**  
 Wednesdays : 3.30-4.30pm  
 6 / 13 / 20 / 27 Jan; 3 / 10 Feb

**Loom Band Club: All years**  
 Mondays : 3.30-4.10pm  
 11 / 18 Jan; 1 / 8 Feb

**Gardening Club: Year 1 & 2**  
 Thursdays : 3.30-4.15pm  
 14 / 21 / 28 Jan

**Writing Club : All years**  
 Wednesdays : Lunchtime

**Sewing Club : All years**  
 Thursdays : Lunchtime

**BSA NEWS:**

**BSA Meeting:** The next meeting of the BSA will take place on Thursday 11 February from 7.30pm at the Rose & Crown. We look forward to seeing as many of you there as possible.



**Fabulous February Raffle:** Don't forget to enter the draw for the return trip to Paris or Brussels. The draw will take place on Friday 12 February and the price must be booked by Sunday 28 February.

To be in with a chance please put £2.50 (suggested donation) in to a named envelope and give to the office by Thursday 11 February.



*Bless our little garden.  
 May it be a safe place for all the little creatures  
 that creep and scurry through the grasses.  
 May it be a busy place for all the little creatures  
 that sip and nibble and munch among the flowers.  
 May it be a joyful place for all the birds that sing  
 in the trees.*

*Amen*



Term Dates 2015 - 2016		
Term	Start	End
3	Tues 5 January	Fri 12 February
4	Mon 22 February	Wed 23 March
5	Mon 11 April	Thurs 26 May
6	Mon 6 June	Fri 22 July
INSET DAYS : Thursday 24 March 2016 Friday 27 May 2016		